

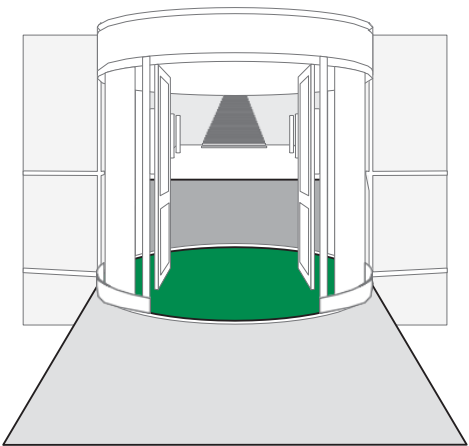
DESIGN ENTRANCE MODULAR SYSTEM WITH 3M NOMAD AQUA 85 MATTING

Modular matting combines high performance with flexible design options and easy on-site installation.

Modular matting system consists of 2 tile versions, each 300 x 300mm square and 17mm deep and incorporating a 2mm drainage foot on the bottom surface.

Modular 9900 matting combines dirt scraping performance with a large central textile infill of 3M Nomad Aqua 85 Dual Fibre Matting. This tile will scrape, as well as removing and holding moisture. 3M Nomad Aqua 85 is a 3M patented polyamide fiber textile.

Modular 9300 Matting is designed solely for scraping. The scraping surface utilises unique triangular multi-angle scraping blades to maximise soil removal, while large open pockets optimise capacity. The tiles simply clip together but are locked in place with the 'over centre' positive locking action to keep the tiles strongly connected.



flexible
design
options

PERFO
TEXCONCEPT®



Feel free to create your own personal design and pattern!

Standard offer with
3M Nomad Aqua 85



Slate Grey

Other proposal with
textiles 95, 75 etc.
(other patterns and
colours)



Anthracite Black

➤ **Easy On-Site Installation and removal!**

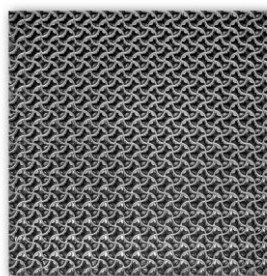
- Tiles lay directly into the the recessed well side by side
- Unique design allows the tiles to easily connect, using a screwdriver to snap into place
- Custom fit tiles to virtually any recessed well with a jigsaw

➤ **Easy Maintenance!**

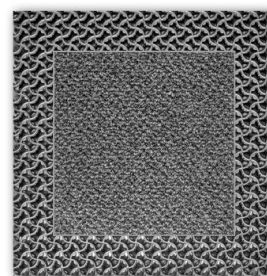
- Daily vacuuming removes dirt that is easily trapped in the gooves of vinyl surface.

➤ **Passes the „high heel test“!**

- The vinyl base is designed with grooves large enough to effectively trap and hold dirt, but small enough to help prevent pointed high heels from getting stuck in the grooves.



Modular 9300



Modular 9900

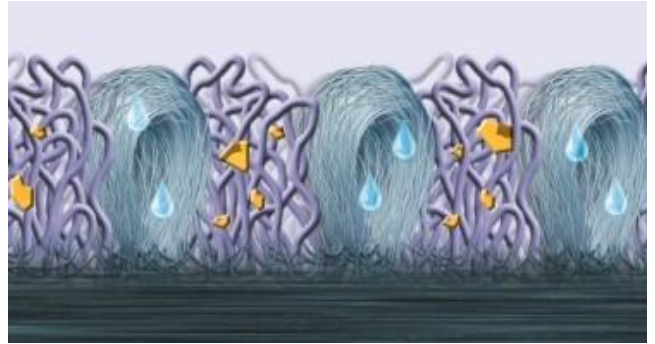
The modular system allows combinations to meet your individual design requirements Possible combinations are:

- Outside scraper Modular 9300 matting, inside mix version Modular 9900 matting.
- Mixed tile version Modular 9900 features 3M Nomad Aqua 85 infill in the centre panel surrounded by scraper tile.
- Patterns in alternating colours with the mix version.
- Designers could choose to have the product applied in diagonal rather than linear pattern.
- Mix version tiles can be concentrated on the areas where the traffic is more intense.
- The available colours also make it possible to combine the mix version Modular 9900 matting with 3M Nomad Aqua Matting and any other mats from our products range.
- Flexibility to remove individual tiles if damaged.

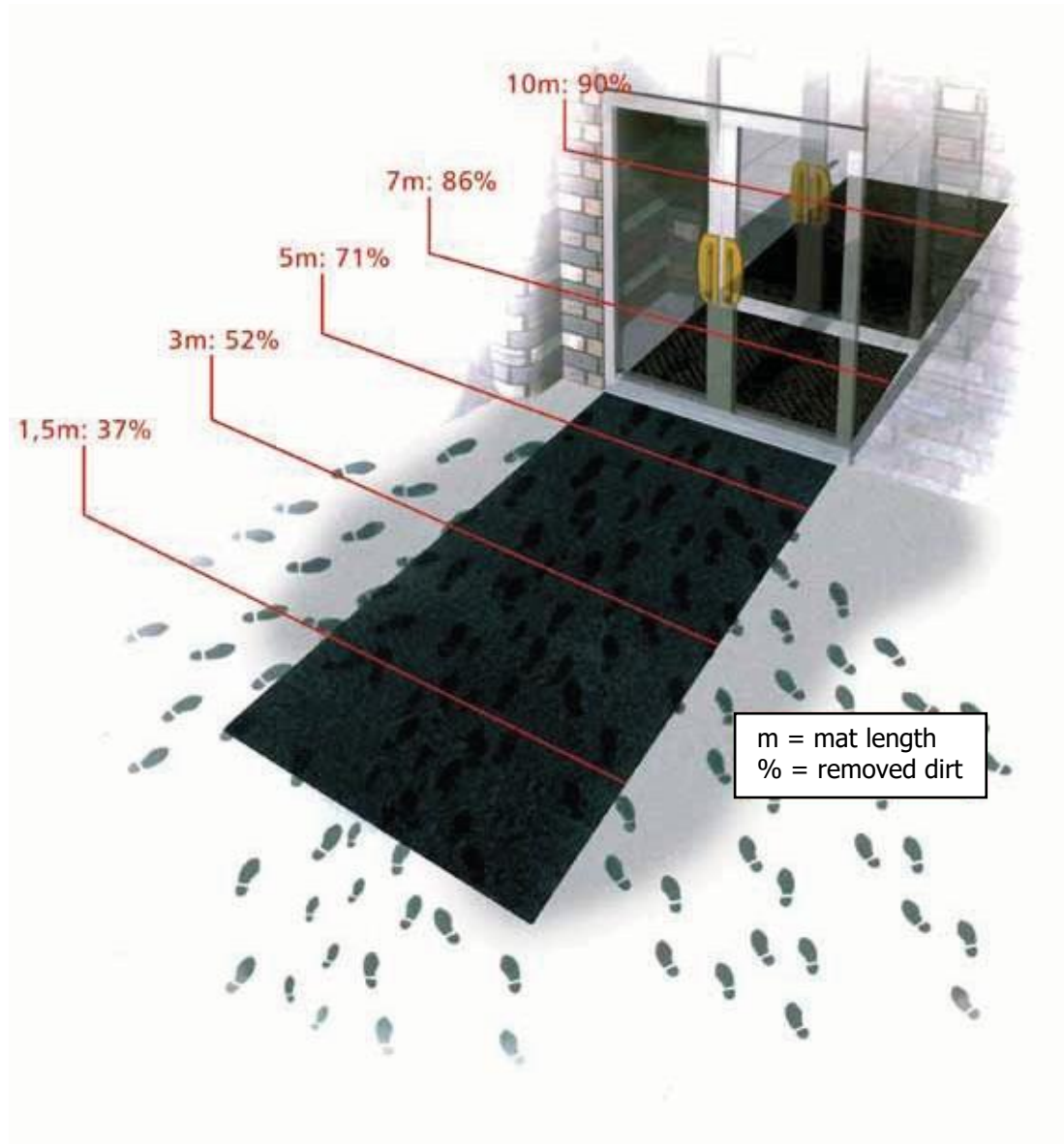


3M Aqua 85 fiber is of great importance:

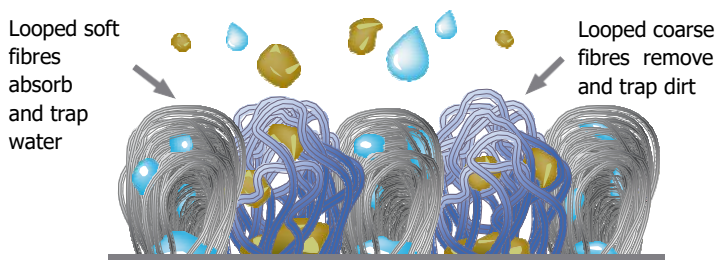
- Large fibres to remove dirt
- Loops arranged in an elegant random pattern to hide more soil
- Solid vinyl backing to protect floors from dirt and reduce mat movement
- Small fibres to absorb excess water



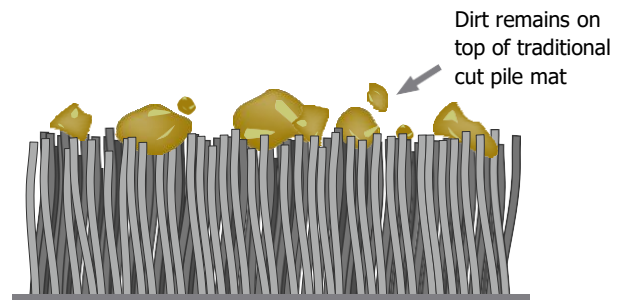
EFFECTIVE ENTRANCE SYSTEM



HOW IT WORKS?

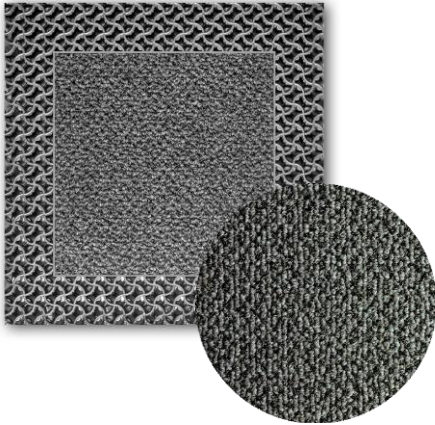


Nomad's innovative dual loop matting system effectively removes and traps dirt and water, preventing it from being tracked into the building.



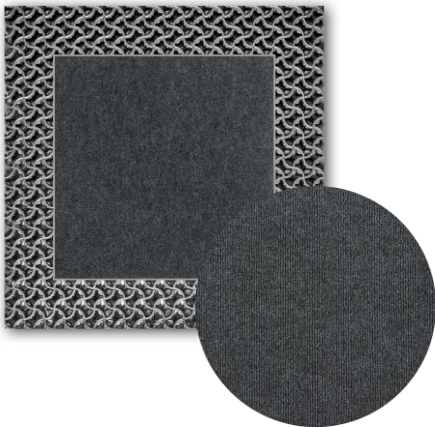
Traditional cut pile mats leave dirt and water exposed on top of the mat. As a result they quickly become ineffective and unsightly.

POSSIBILITIES OF MODULAR TEXTILE MIX



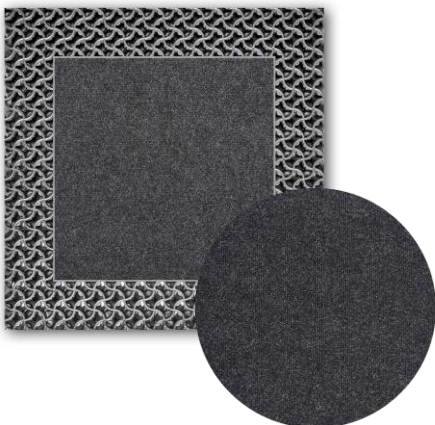
MODULAR 9900 3M AQUA 85:

- 3M Aqua 85 textile inside.
- Pile: nonwoven Polyester and Polyamid
- Pile weight 770g/m²
- Pile height 5,5mm
- Fire resistance class: Bfl-s1
- Total Water Absorption: 4,0 Liter/m²
- Slip resistance for textile R12



MODULAR 9900 75:

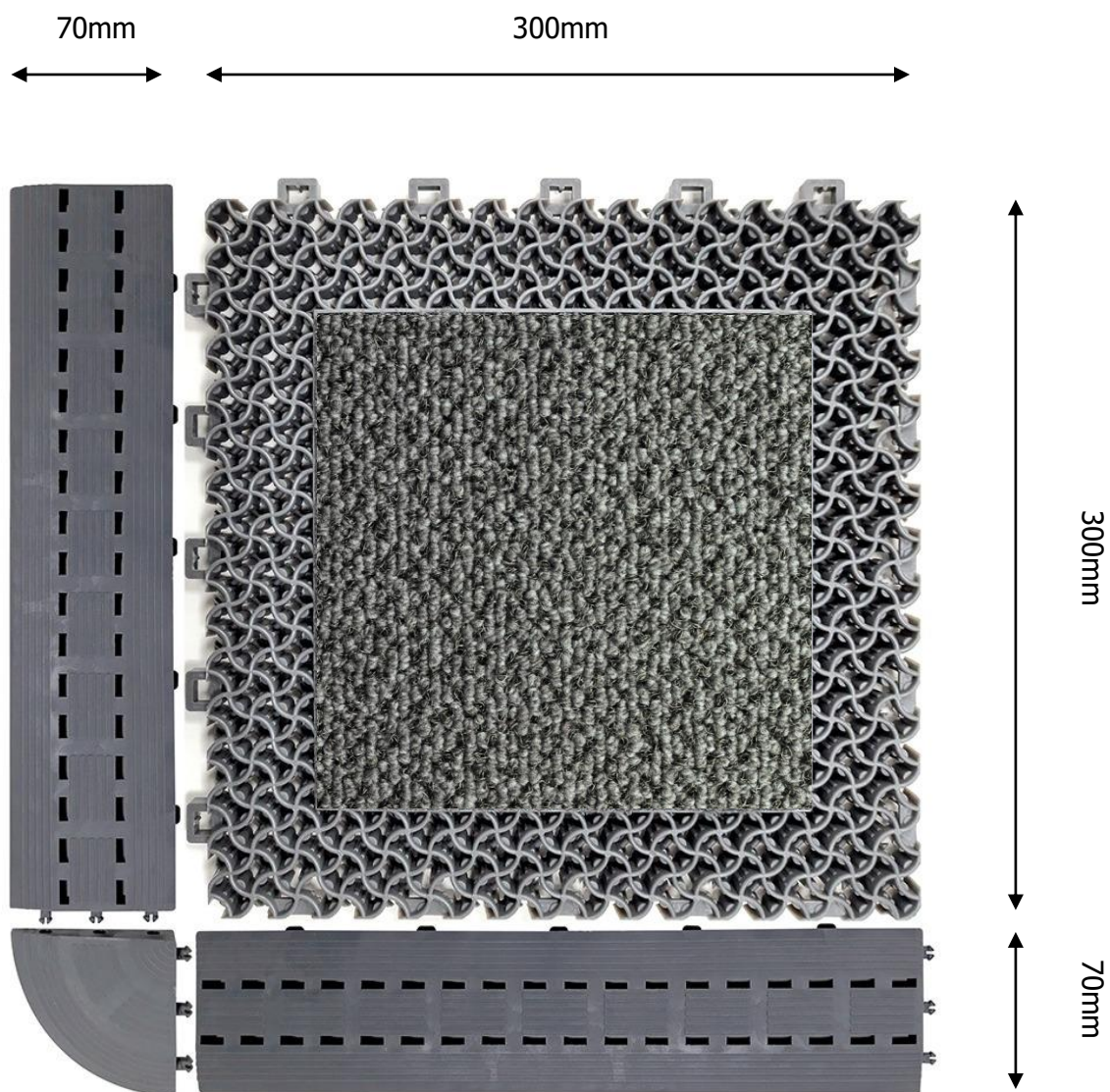
- 75 textile inside.
- Pile Content 100% PP
- Surface aspect Rib
- Pile weight 900gr/m²
- Pile height 3,5mm



MODULAR 9900 95:

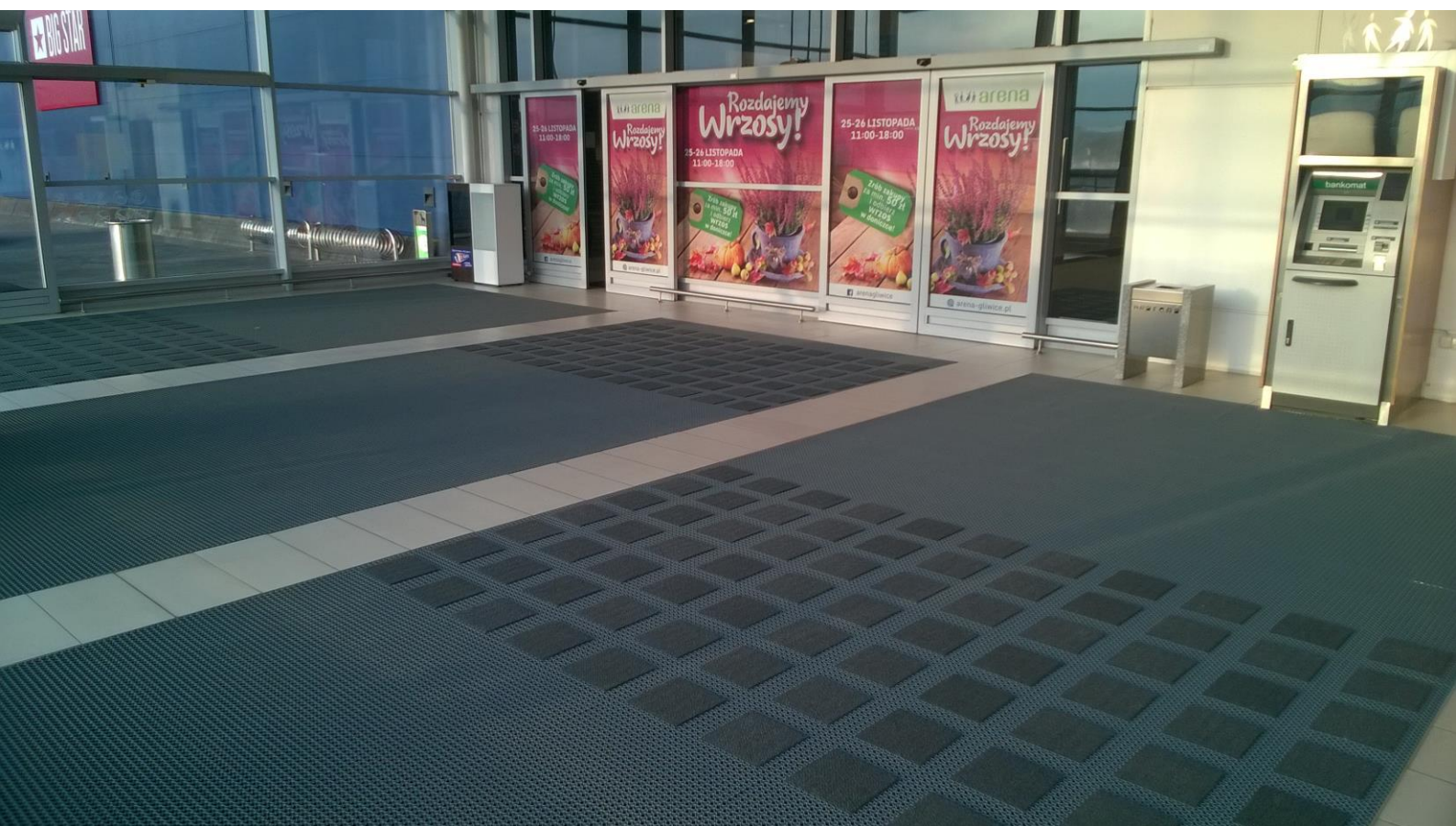
- 95 textile inside.
- Pile Content 100% PP
- Surface aspect Rib
- Pile weight 1500gr/m²
- Pile height 4,5mm

ACCESORIESS – CORNERS AND EDGES





A lot of possibilities!





Perfect for revolving doors!



PERFO Sp. z o.o. TEXCONCEPT Sp. K.

ul. Ostrowska 398 - 61-312 Poznań – POLAND – phone Sales +48 512 550 994 / +48 509 787 047

mail. perfo@texconcept.pl - www.perfo-texconcept.com